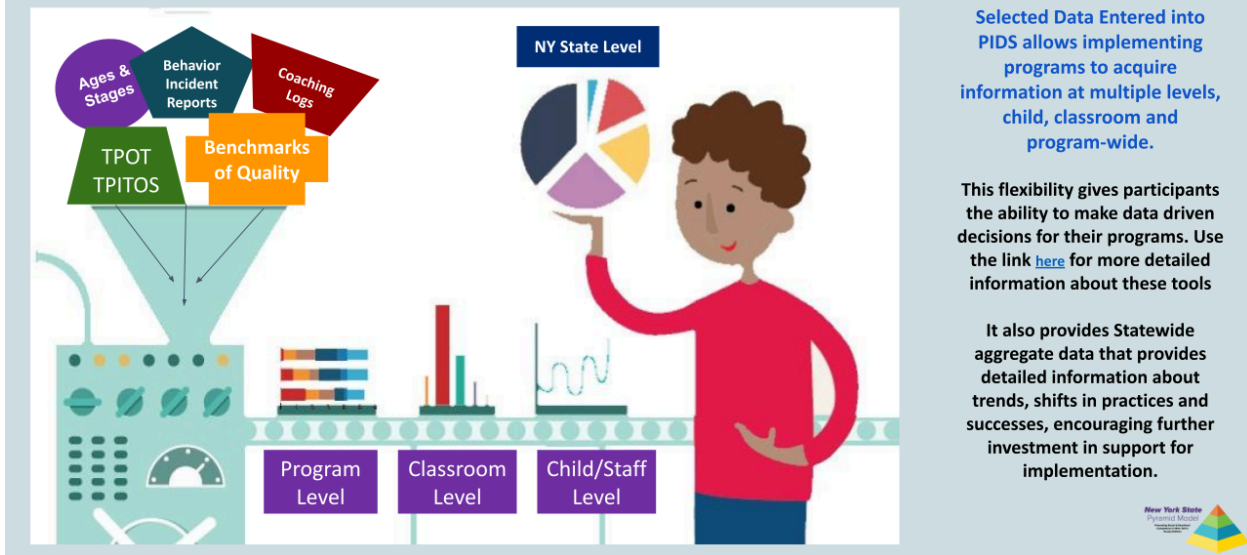


Data Tools entered into PIDS can provide reports to guide decision making at every Pyramid Model Tier



The **Benchmarks of Quality (BOQ)** is a self-evaluation tool at the program level that measures a program's progress with Pyramid Model implementation.

- Program Leadership Teams answer “not in place”, “partially in place”, or “in place” for various elements that make up a Pyramid Model program.

The **Implementation Action Plan** is a program's step by step plan for achieving implementation fidelity. This action plan is reviewed with the Leadership Coach and edited frequently by the Implementation Leadership Team to monitor their progress toward their goals.

The **Ages and Stages Questionnaire: Social and Emotional-2 (ASQ:SE-2)** is a screening tool at the child level that measures the social and emotional development of children ages 2-60 months.

- ASQ:SE-2 screenings are conducted by the child's at-home caregiver or teacher through completing a questionnaire about the child.

Behavior Incident Report (BIR) is a tool at the child level where incidents of challenging behaviors are documented.

- BIR trends can be used to track incidents for specific children to support interventions or additional services.

The **Teaching Pyramid Observation Tool (TPOT)** is a preschool classroom level observation tool to measure the degree Pyramid Model practices are being implemented. The **Teaching Pyramid Infant-Toddler Observation Scale (TPITOS)** is an observation tool for infant/toddler classrooms.

- Trained TPOT/TPITOS Observers come into classrooms for two hours every six months to answer questions in the TPOT/TPITOS form based on their observations.

- These observation tools can only be used by reliable users (we have a list of those people in NY).
- There will be opportunities for you to have someone from your site attend the session to pass the test to become a reliable user.
- Family child care will select the tool that represents the predominant number of children in your group. for instance, if you have more preschoolers than infants and toddlers then you would use the TPOT. but if you have mostly 2s and 3s you would use the TPITOS tool.

Classroom Coaching Logs are a classroom level tool that collects data on coaching visits with teachers.

- Classroom Coaching Logs track each coaching cycle, this includes the professional development strategies the teacher has selected to support teachers as they implement Pyramid Model practices.
- The number and duration of the meetings are reported in PIDS on a monthly basis.

Data Tool Resources

The National Center for Pyramid Model Innovations (NCPMI) provides additional information on the data tools and their data collection forms.

- Click on the link to the NCPMI website below and look under “Classroom & Program Tools”
 - <https://challengingbehavior.org/implementation/data-decision-making/overview/>